

Cambodia • Lao PDR • Thailand • Viet Nam
For sustainable development

The 7th MRC Stakeholder Forum – Mekong Transboundary Integrated
Water Resources Management Forum

*Bangkok, Thailand
20-21 May 2019*



MRC Project: Sustainable Use and Management Of The Wetlands In The LMB



Prayooth Yaowakhan & So Nam

*Environmental Management Division
Mekong River Commission Secretariat
Vientiane, Lao PDR*

Background and Rationale (1)



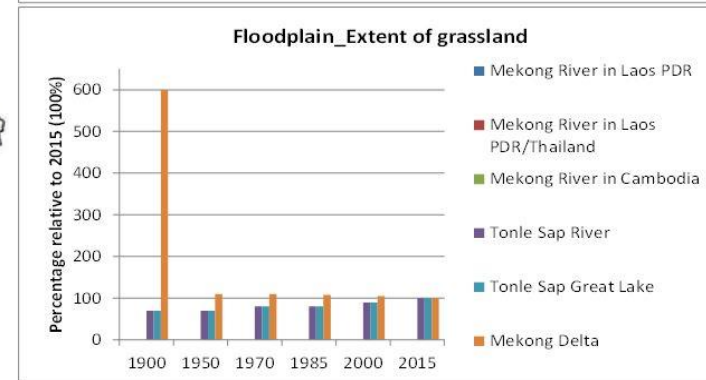
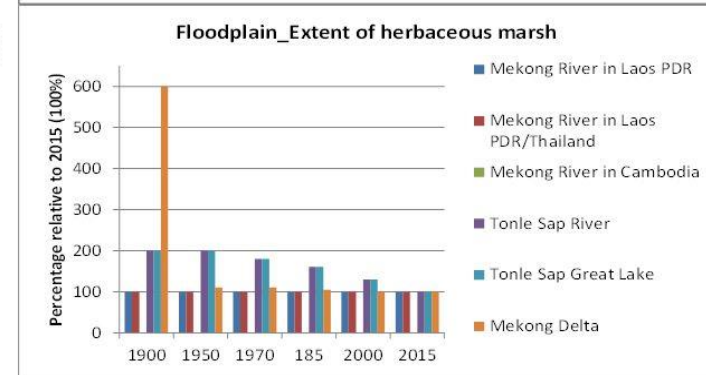
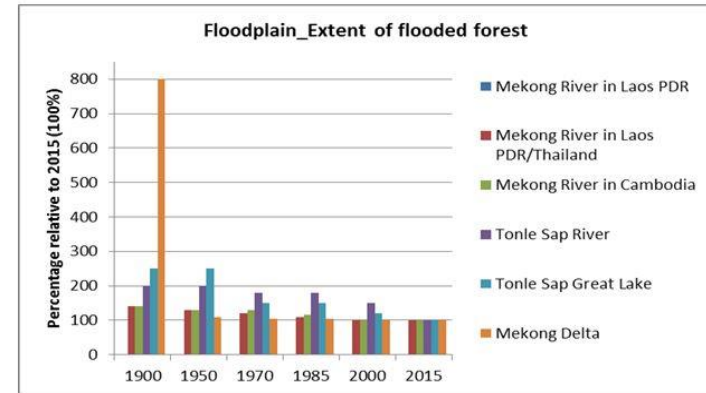
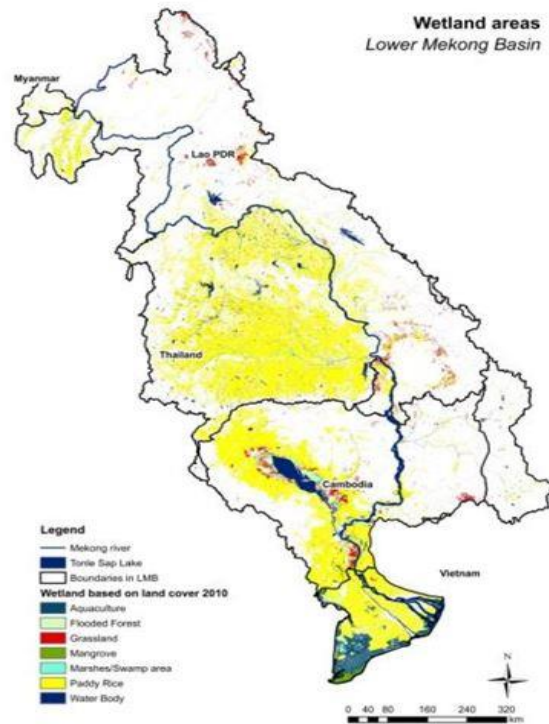
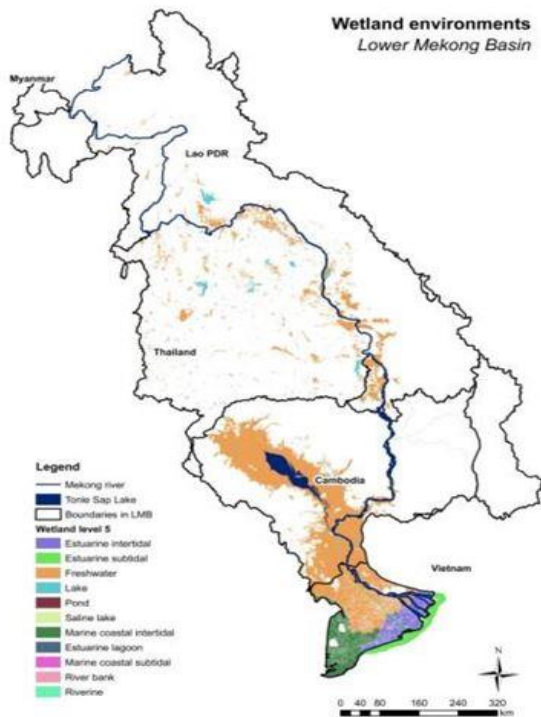
- LMB Wetlands play a vital role in the livelihoods of local people and the socio-economic development of the region, as well as a major source of export revenue.
- LMB wetlands are threatened and being gradually degraded by human activities: reclamation and conversion to rice fields, increased urban runoff, increased riverine navigation, intensification of agriculture and aquaculture with increased use of fertilizer and pesticide and increased discharge of urban waste water, and the expansion urban and industrial areas with year-round flood protection



Background and Rationale (2)



- Long period of decline
- Recent declines in paddy rice, grassland and mangroves
- Increases in aquaculture, other water bodies and swamps



Background and Rationale (2)



- Wetland inventory and ecosystem functions assessment are **important steps** in ensuring good planning for effective management of wetlands in the LMB countries for the benefit of enhancing resource protection and sustainable use of wetlands; and
- Of the existing MRC Strategic Plan 2016-2020, the ED is developing a **Regional Methodology** for Wetland Ecosystem Inventory, Assessment, and Management in the Lower Mekong Basin.



Source: www.mekongfishnetwork.org, 2016



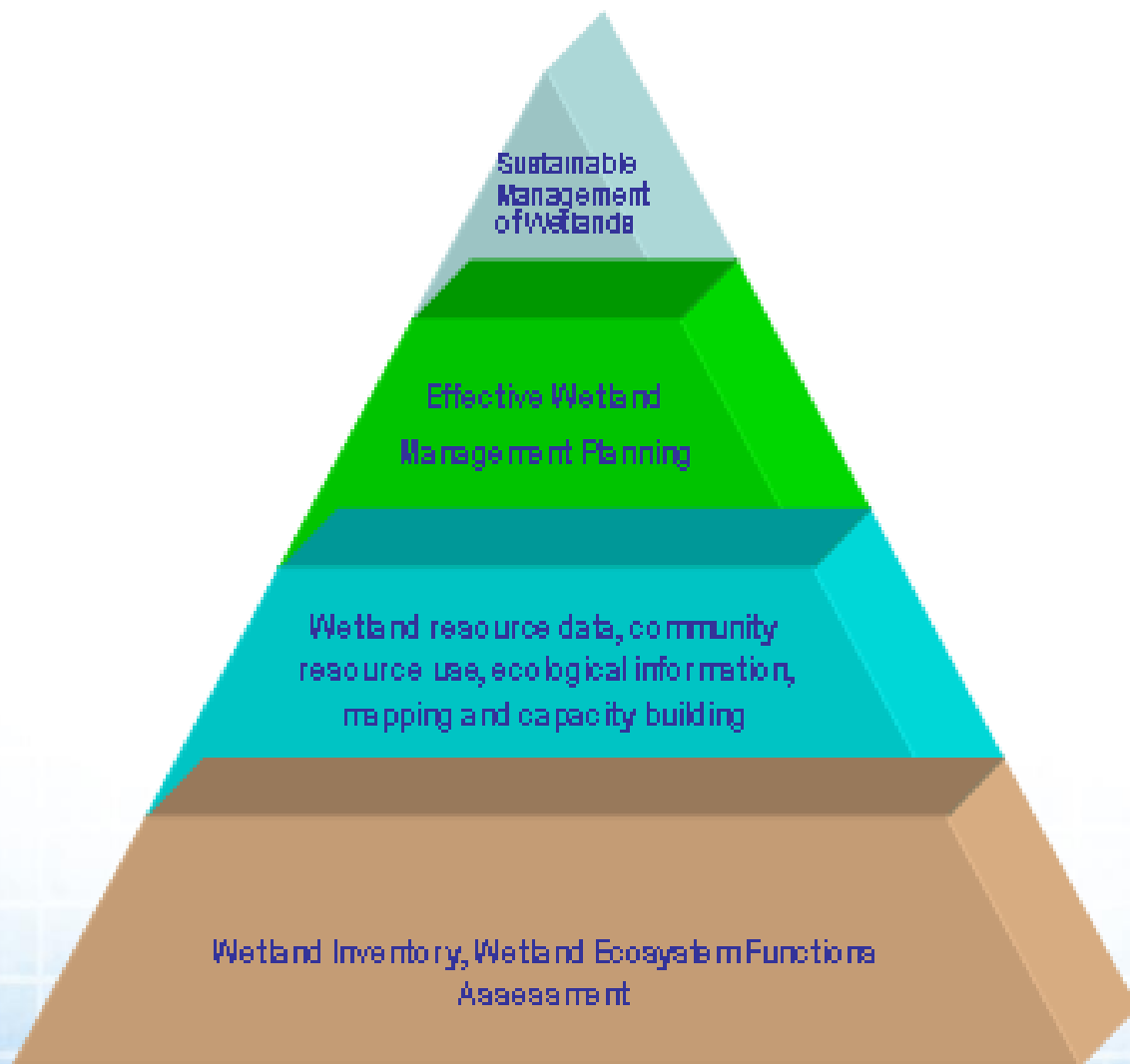
Source: www.mekongfishnetwork.org, 2016

Objectives of the Project



1. **Review and update** the MRC wetland database, information and maps, as well as updating of the wetland inventories and databases for the selected pilot sites;
2. **Develop and test methodology** for inventory and assessment of wetland ecosystem functions and services as well as for prioritization of sensitive wetland sites (environmental hotspots); and
3. **Capacity building** through exchanges of experiences and lessons on wetland inventory, ecosystem functions assessment and management among the LMB countries.

Scope and Approach



- The Project is **not designed** to be a rural or infrastructure development initiative.
- It is to **generate tools, data and information and capacity strengthening** (“soft” activities).

Expected Outputs



Output 1: Wetland database, information and maps reviewed and updated;

Output 2: Wetland inventory methodology developed, tested and finalised for use in the LMB countries, and LMB database system developed;

Output 3: Inventories of selected wetland sites carried out and a prioritised wetland list prepared;

Output 4: Methodology and tool for WEFASAM including WBIA developed and tested for viability for use in the LMB countries; and

Output 5: Wetland management capacity strengthened through trainings and exchange of study visits and lessons learned within countries of the LMB.

Major Deliverables (1)



- Four national review reports on existing wetland database, information and maps from Cambodia, Lao PDR, Thailand and Viet Nam.



First Draft Report

Review existing Lower Mekong Basin wetland inventory (WI), and ecosystem function, asset and services assessment and management (WEFASAM), and wetland database (WdBase) system (including the updated map) in 2017

Evidences from Cambodia



Prepared by Meik Sopha, National Expert for Wetland Ecosystem Assessment and Management of Cambodia
16th May 2018



Third Draft Report

Review existing Lower Mekong Basin wetland inventory (WI), and ecosystem function, asset and services assessment and management (WEFASAM), and wetland database (WdBase) system (including the updated map) in 2017

Evidences from Lao PDR



Prepared by Dounghann Engnamsy, National Expert for Wetland Ecosystem Assessment and Management of Lao PDR
26th June 2018



First Draft Report

Review existing Lower Mekong Basin wetland inventory (WI), and ecosystem function, asset and services assessment and management (WEFASAM), and wetland database (WdBase) system (including the updated map) in 2017

Evidences from Thailand



Prepared by Dr. Chavalit Vidthayasaan, National Expert for Wetland Ecosystem Assessment and Management of Thailand
(25 February 2019)



First Draft Report

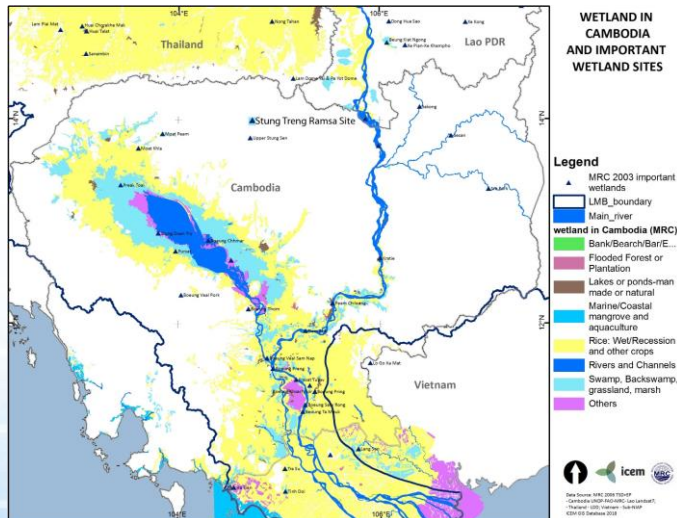
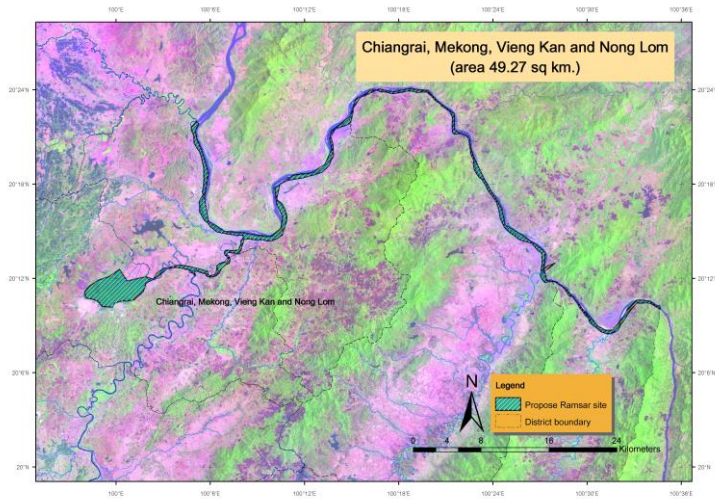
Review existing Lower Mekong Basin wetland inventory (WI), and ecosystem function, asset and services assessment and management (WEFASAM), and wetland database (WdBase) system (including the updated map) in 2017

Evidences from Viet Nam



Prepared by Dr. Luu Hong Truong, National Expert for Wetland Ecosystem Assessment and Management/ Team Leader of Viet Nam
(23 April 2018)

Major Deliverables (2)

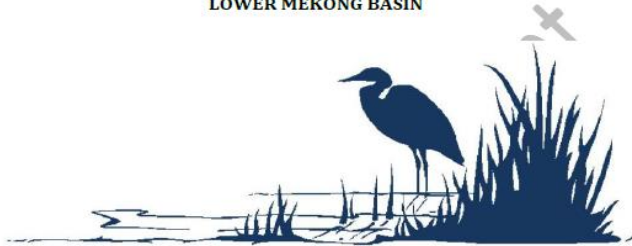


- Wetland database and maps for the LMB is being updated.
- Two reports; (1) Assessment report on existing LMB wetland information, maps and database in 2017; and (2) Technical report on LMB wetland database system development and management.

Major Deliverables (3)



STATUS OF AND TRENDS IN WETLANDS AND THEIR SERVICES IN THE
LOWER MEKONG BASIN



(Insert date, month and year)

- A regional report on status and trend in wetlands and their services in the LMB.

Major Deliverables (4)



Technical Note No. 1/2017



TECHNICAL NOTE
on

Criteria and Process of Wetland Site Selection for
Implementation of Testing and Improvement of WI and
WEFASAM (including WBIA)



Prepared by Environmental Management Division

22 December 2017

- Technical Note on **Criteria and Process of Wetland Site Selection** for Implementation of Testing and Improvement of WI and WEFASAM (including WBIA)

Major Deliverables (5)



Guideline No. 2/2017



Preliminary Guidelines
for
The Development of the Emergency Response and Communication Plan
for the Wetland Field Survey Activities
(First Draft)



Prepared by Environmental Management Division

6 December 2017

- Guidelines for the Development of the Emergency Response and Communication Plan for the Wetland Field Survey Activities.

Major Deliverables (6)



Technical Note No. 3/2017



TECHNICAL NOTE
on

Conceptual Framework for the Methodology and Tool of
Wetland Ecosystem Functions, Assets and Services
Assessment and Management (WEFASAM) and Assessment of
Potential Indicators (including Wetland Biodiversity Indicator
Assessment; WBIA)



Prepared by Environmental Management Division

3 August 2017

- Technical Note on **Conceptual Framework** for the Methodology and Tool of WEFASAM and Assessment of Potential Indicators (including WBIA)

Major Deliverables (7)



Guideline No. 1/2017



Preliminary Guidelines
for

The Implementation of the LMB Wetland Inventory using the
Methodology and Tool of Wetland Ecosystem Functions, Assets and
Services Assessment and Management (WEFASAM) and Wetland
Biodiversity Indicator Assessment (WBIA)

(First Draft)



Prepared by Environmental Management Division

18 August 2017

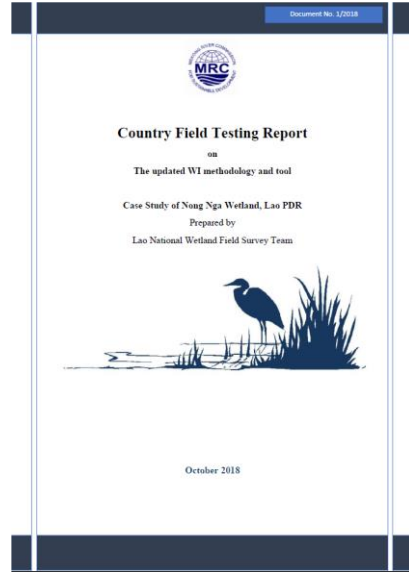
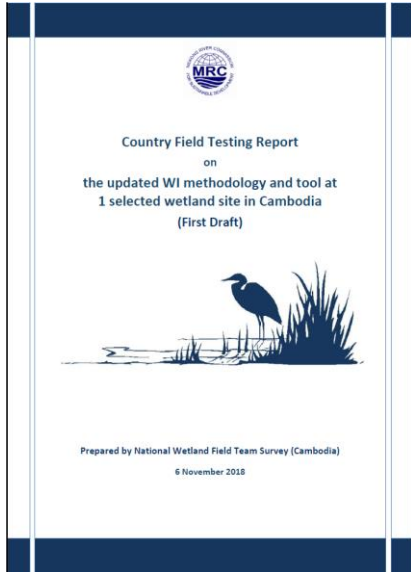
- Guidelines for the implementation of the LMB WI using the **methodology and tool of WEFASAM and WBIA**

Major Deliverables (8)

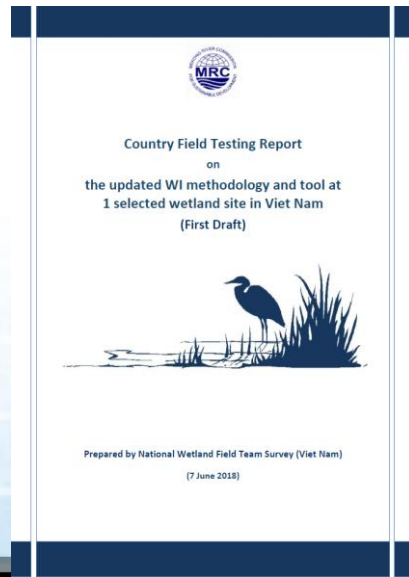
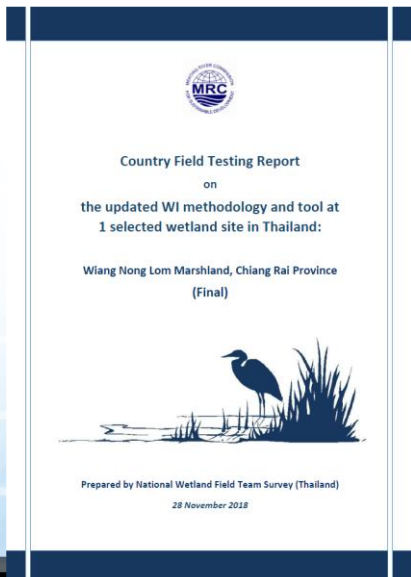


- **Field testing** using the proposed wetland inventory data form was **conducted** at one selected wetland site each of the MC:
 - Prek Toal Ramsar Site (Cambodia);
 - Nong Nga (Nong Nia) Wetland (Lao PDR);
 - Wiang Nong Lom Marshland (WNL), Chiang Rai Province (Thailand); and
 - Lang Sen Wetland Reserve (Viet Nam)

Major Deliverables (9)



- Four country **field testing reports** on the updated WI methodology and tool at 1 selected wetland site each of the MC.



Issues and Challenges



- Difficulties in some wetland sites access during the wet season.
- Lack of the polygon database in the existing wetland maps (especially the exact boundary of existing wetlands) from the 4 MCs.
- Limited capacity in national and local levels on the implementation of wetland inventory, assessment, management and governance.
- Insufficient involvement of local communities on the sustainable wetland management in the LMB.



Thank you!