



**12<sup>th</sup> REGIONAL  
STAKEHOLDER FORUM**

29 June 2022, Bangkok, Thailand

# Integrated water management

# in Thailand



**Mr. Thanaroj Worraratprasert**  
**Expert on Water Situation Analysis**  
**Office of the National Water Resources (ONWR)**



**12<sup>th</sup> REGIONAL  
STAKEHOLDER FORUM**

29 June 2022, Bangkok, Thailand

# Outline:

**01**

**Integrated water management in  
Thailand**

**02**

**Mekong communication during flood  
and drought events**

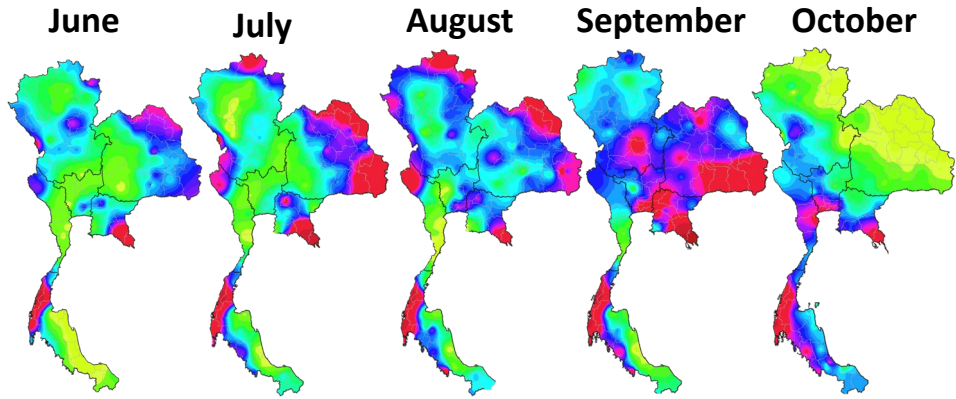
**03**

**Challenges**

# Integrated water management in Thailand

## OneMap

### Rainfall Forecasted



forecasting the available water

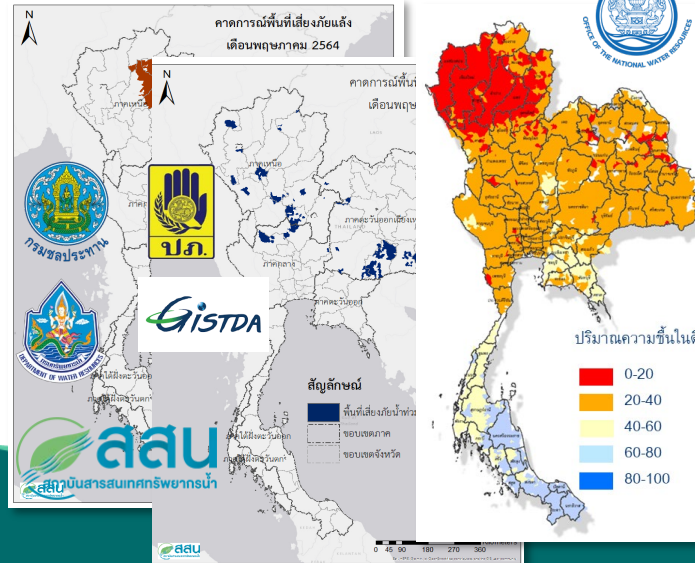


## Rainy and Dry season

### Flood & Drought Plan



### Flood & Drought Risk



## Drought Implementation Monitoring



The committee accepts preparation for water resource management in the rainy and dry seasons



## Flood Implementation Monitoring



Drought plan 2021/2022

## Integrated 9 Measures to Drought Management

SUPPLY

1 Accelerate water retention



2 Provide the reserve water sources



3 Artificial rain-making



DEMAND

Set water allocation plan



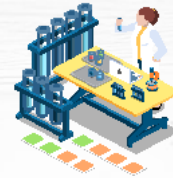
5 Determine plants plan



6 Reserve water before plants



7 Water quality alerts



MANAGEMENT

8 Follow up and evaluation



9 Create awareness



## 2021 Drought Coping Measures

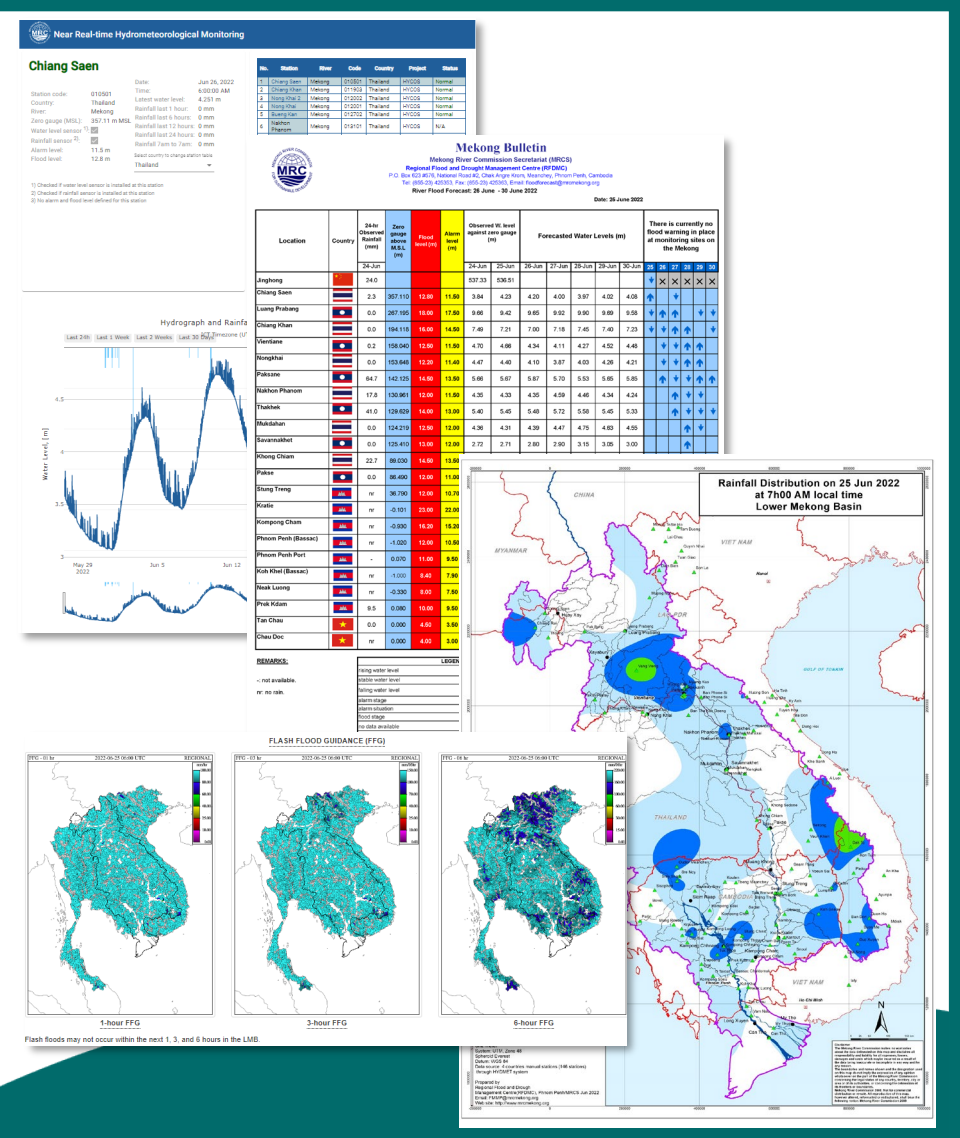
Water agencies who have related water management conduct measures for implementation and the last dry season,





**Thailand became No droughtland**



# 02

# Mekong communication during flood and drought events



-  Increasing frequency of forecasting flood during water crisis
-  Need for river monitoring station on the end of tributary rivers from the upper subbasin
-  Checking error of simulation to improve flood and drought forecasting
-  Need to build one Data Platform in Mekong River Basin





# 12<sup>th</sup> REGIONAL STAKEHOLDER FORUM

29 June 2022, Bangkok, Thailand

***THANK YOU***  
**ආර්තභවනං ආර්තභවනං** 🙏