



# MRC Strategic Plan 2021 – 2025

## ➤ What is the MRC Strategic Plan (MRC SP)?



The MRC SP is a **corporate action plan that maps out how the MRC will support the implementation of the Basin Development Strategy (BDS) 2021-2030 over the next five years.**

The MRC SP determined **95 specific activities and 86 expected deliverables**, all of which contribute to achieving the 11 outcomes set out in the BDS.

The MRC SP moves the MRC towards **more proactive regional planning and cooperation**, comprehensive monitoring of the basin, and enhanced forecasting and warning of floods and droughts. It supports coordinated operations of water infrastructure to minimise risks to vulnerable communities and protect environmental assets. The MRC SP also supports the recovery from COVID-19 and **builds the resilience of communities for possible similar disease outbreaks.**

## ➤ What are the foundations of the MRC SP?

1995 Mekong Agreement

BDS 2021-2030

State of the Basin Report 2018

MRC Summits

Lessons Learnt from SP 2016-2020

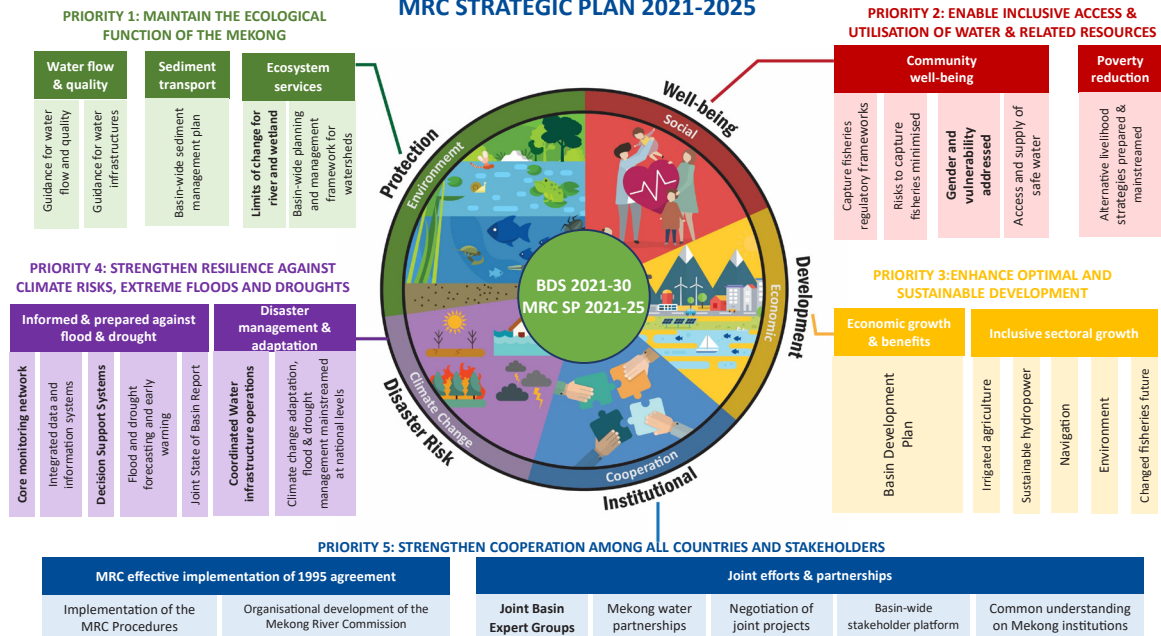
Stakeholder Consultations

## ➤ How will the MRC SP be implemented?

The MRC SP will be implemented by the MRC Secretariat in collaboration with national counterparts from the Member Countries, partners and other stakeholders. The activities will be operationalised through the multi-year work plans.

The work plans will maximise the engagement of line/implementing agencies through the MRC expert groups to ensure national uptake of regional products.

## BASIN DEVELOPMENT STRATEGY 2021-2030 AND MRC STRATEGIC PLAN 2021-2025

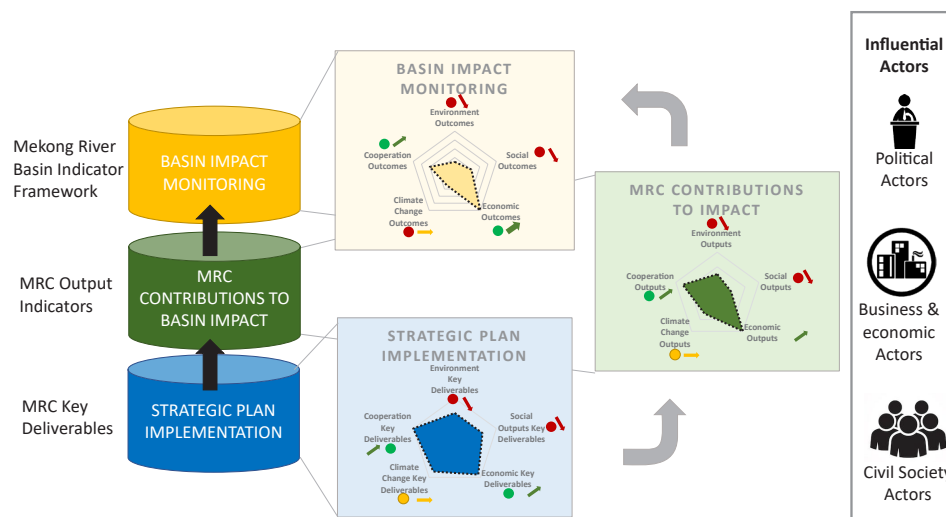


### ➤ What is the budget of the MRC SP?

The total budget for the implementation of the MRC SP is about USD 60.5 million, or USD 12 million on average per year. About 40 percent of the budget will be contributed by the MRC Member Countries – Cambodia, Lao PDR, Thailand and Viet Nam, and the rest by Development Partners.

### ➤ How will we know if the BDS and MRC SP implementation is successful?

The MRC M&E system monitors the implementation of the MRC SP in terms of progress against deliverables, indicators and tasks. Mid-year and annual reports communicate the results of this monitoring to different stakeholders. Mid-term assessment of the MRC SP cycle will be conducted by independent experts. The evaluation will feed into the next MRC SP, prepared in 2024 to contribute to the remaining BDS for 2026-2030.



For details of the SP activities, please visit <https://cutt.ly/6xOgARu> or scan the QR code:



For more information: [www.mrcmekong.org](http://www.mrcmekong.org)

