



Mekong River Commission

Office of the Secretariat in Vientiane
184 Fa Ngoum Road, Ban Sithane Neua,
P.O. Box 6101, Vientiane, Lao PDR
Tel: (856-21) 263 263 Fax: (856-21) 263 264

mrcs@mrcmekong.org

Office of the Secretariat in Phnom Penh
576 National Road, no. 2, Chok Angre Krom,
P.O. Box 623, Phnom Penh, Cambodia
Tel: (855-23) 425 353 Fax: (855-23) 425 363

www.mrcmekong.org

MRC Council Study

Cumulative Impact Assessment of Water Resource Development Scenarios

Design and methods

Prepared by:
The Council Study Core Team

December 2016

Document history

Version	Revision	Description	Issue date	Issued by
1	0	Draft report prepared for internal discussion	15 Oct 2015	Scenario assessment team
	1	Draft report prepared for consideration of RTWG, based on internal comments and suggestions	16 November 2015	Scenario assessment team
2	0	Updated draft report for RTWG, based on further internal comments (title: Approach and Methodology)	30 November 2015	AK
3	0	Revised report based on Phase II implementation plan and progress of disciplinary and thematic sector assessment teams.	20 December 2016	LL with Core Team

Executive summary

The purpose of this report is to provide guidance to the design and methods for the triple-bottom lined Cumulative Impact Assessment (CIA) of basin-wide water resource development scenarios in multiple sectors under the MRC Council Study (CS). The approach builds upon earlier basin-wide assessment work undertaken by the MRC.

Process

A Cumulative Impact Assessment is a complex, iterative, process with many components. In this Assessment water resources development scenarios drive a series of modelling and evaluation activities that endeavour to link projected changes in the hydrological regime to sediment dynamics, changes in biological resources, and ultimately changes in economic and social outcomes (Figure A). The Cumulative Impact Assessment will integrate and synthesize the findings from individual disciplinary and sector assessments. Stakeholder inputs are important to the legitimacy and credibility of this process, providing feedback leading, for instance, to adjustments in scenarios and choice of indicators.

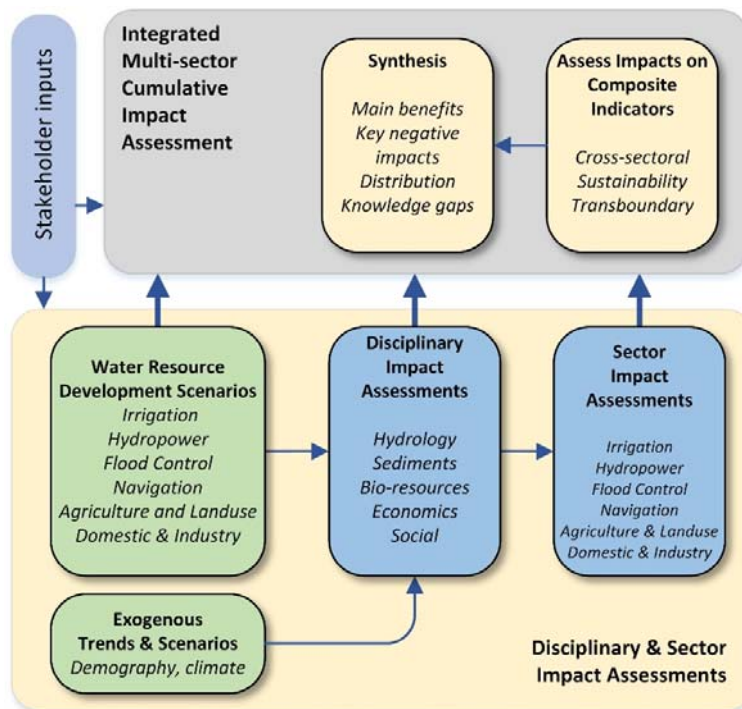


Figure A. Overview of key elements of the cumulative impact assessment approach.

While key stakeholders of the Council Study include the Regional Technical Working Group, the NMC Secretariats and ultimately the MRC Joint Committee for whom the Assessment reports are primarily written, stakeholder forums are also planned to give opportunities for inputs from a broader range of stakeholders, including from academics, NGOs and community representatives to be involved.

Scenarios

Scenarios are plausible stories or sets of assumptions about the future or past. The CIA is constructed around three main water resources development scenarios for the Mekong River Basin. The first scenario, *Early Development*, describes the status of water resources development in 2007. This scenario is often treated as the reference conditions against which to compare two other scenarios. The second scenario, *Definite Futures*, representing the likely status of water resource development in 2020, and the third scenario, *Planned Development*, a plausible visions of the status in 2040.

The scenarios are a product of consultation and negotiation that consider development in six water-related sectors and are based on plans and projections approved by the Member Countries. In addition to these main scenarios a set of additional sub-scenarios for 2040 have been constructed to investigate the impacts of climate change and alternative patterns of water resource development in individual sectors.

Indicators

Indicators will play an important role in taking outputs of one analysis as inputs into another as analyses move from the individual sector and disciplinary assessments to the multi-sector cumulative impact assessment (Figure A). The CIA has reviewed the MRC Indicator Framework to inform selection and classification of indicators for further development. To strengthen the logical coherence of the indicators and to meet the rigorous integration requirements of the CIA, new strategic indicators have been introduced whilst others have been re-classified or dropped. To better address the key objectives of the CS related to impacts of water resource development in particular sectors additional sub-scenarios have been introduced.

Reporting

The Cumulative Impact Assessment Report will be equivalent to the Main Report. It will integrate the key findings of the individual thematic sector reports with those of the CIA to assess the overall impacts and benefits of the water resources development scenarios. In particular, the report will present the valuation of changes in composite assessment indicators arising from different scenario assumptions of how water resources are developed. Based on this information, the report will describe the evolution of regional distribution of benefits, costs, impacts (positive and negative) and risks of water resources development in the Mekong basin. Finally, the possible implications for planning and decision-making will be discussed. The report will set out recommendations covering potential mitigation, and where appropriate the need for further studies. The report will be supported by a wide range of technical documentation emanating from the Council Study.

Contents

Executive summary

Abbreviations and acronyms

1	Introduction	7
	<i>1.1 Purpose of this report</i>	7
2	The Council Study	8
	<i>2.1 Objectives of the Council Study</i>	8
	<i>2.2 Foundations of the Council Study</i>	9
	<i>2.3 Organisation of the Council Study</i>	10
3	Design of the Assessment	12
	<i>3.1 Origins</i>	12
	<i>3.2 Overview</i>	12
	<i>3.3 Main scenarios</i>	13
	<i>3.4 Sub-scenarios</i>	15
	<i>3.5 Indicators</i>	20
	<i>3.6 Assessment areas</i>	23
4	Methods	24
	<i>4.1 Overall</i>	24
	<i>4.2 Environmental assessment</i>	26
	<i>4.3 Social assessment</i>	26
	<i>4.4 Economic assessment</i>	27
	<i>4.5 Thematic sector assessments</i>	27
	<i>4.6 Integration & synthesis</i>	28
5	Outputs and reporting	30
	<i>5.1 Cumulative Impact Assessment Report</i>	30
	<i>5.2 Supporting reports and documents</i>	31
	<i>5.3 Databases and tools</i>	32
6	Literature Cited	34

Tables

Table 1	Main water resources development scenarios for CIA.	14
Table 2	Climate change sub-scenarios for analysis CIA.	16
Table 3	Sub-scenario to better understand impacts of early development.	16
Table 4	Sub-scenario to better understand impacts of different assumptions about future agricultural land-use.	17

Table 5	Sub-scenarios to better understand impacts of different assumptions about future flood protection investments.	18
Table 6	Sub-scenarios to test the effects of water resources development in the irrigation sector.	18
Table 7	Sub-scenarios to test the effects of water resources development in the hydropower thematic sector.	19
Table 8	Sub-scenarios to test the effects of water resources development in navigation sectors.	19
Table 9	Sub-scenarios to test the effects of water resources development in in the domestics and industrial water use sectors	20
Table 10	Comparison of the strategic indicators used in the assessment and the emerging MRC indicator framework.	21
Table 11	Candidate composite strategic indicators for use in the Cumulative Impact Assessment based on selected indicators from the disciplinary assessments.	22
Table 12	Scenario and sub-scenario comparisons used by the disciplinary and thematic assessments. Cells left empty are a lower priority and may be evaluated after others have been completed.	24
Table 13	Proposed organization of the final Cumulative Impact Assessment report.	30
Table 14	Supporting reports for the CIA	31
Figures		
Figure 1	Implementation arrangement showing thematic and discipline teams.	10
Figure 2	Overview of the cumulative impact assessment process and its relationship to disciplinary and thematic sector assessments	13
Figure 3	Impacts and benefits from water resource development are not instantaneous or necessarily linear over time.	26

Abbreviations and acronyms

AIP	: Agriculture and Irrigation Programme (of the MRC)
BDP	: Basin Development Plan
BDP2	: BDP Programme, phase 2 (2006 –10)
BDS	: (IWRM-based) Basin Development Strategy
BioRA	: Biological resource assessment team (under Council Study)
CIA	: Cumulative Impact Assessment (under Council Study)
CCAI	: Climate Change and Adaptation Initiative (of the MRC)
CNMC	: Cambodia National Mekong Committee
DMP	: Drought Management Programme (of the MRC)
EP	: Environment Programme (of the MRC)
FMMP	: Flood Mitigation and Management Programme (of the MRC)
FP	: Fisheries Programme (of the MRC)
IKMP	: Information and Knowledge Management Programme (of the MRC)
IWRM	: Integrated Water Resources Management
ISH	: Initiative for Sustainable Hydropower (of the MRC)
JC	: Joint Committee (of the MRC)
LMB	: Lower Mekong Basin
LNMC	: Lao National Mekong Committee
M&E	: Monitoring and evaluation
MCs	: Member Countries
MIWRMP	: Mekong Integrated Water Resources Management Project (of the MRC)
MRC	: Mekong River Commission
MRCS	: Mekong River Commission Secretariat
MRC-SP	: MRC Strategic Plan
MWRAS	: Mekong regional water resources assistance strategy (of the World Bank)
NIP	: National Indicative Plan (C-NIP: Cambodia, L-NIP: Lao PDR, T-NIP: Thailand, V-NIP Viet Nam)
NMC	: National Mekong Committee
NMCS	: National Mekong Committee Secretariat
NAP	: Navigation Programme (of the MRC)
PMFM	: Procedures for Maintenance of Flow on the Mainstream
PWUM	: Procedures for Water Use Monitoring
RDA	: Regional distribution analysis
TCU	: Technical Coordination Unit (of the MRCS)
TNMC	: Thai National Mekong Committee
TRG	: Technical Review Group (of the MRC)
UMB	: Upper Mekong Basin
VNMC	: Viet Nam National Mekong Committee

Blank page

1 Introduction

1.1 Purpose of this report

The purpose of this report is to provide guidance to the approach and methodology for the integrated, multi-sector, cumulative impact assessment (CIA) of basin-wide development scenarios under the MRC Council Study. As the CIA is primarily a synthesis of the findings from the disciplinary and thematic sector assessments, this report also provides an overview of the main features of the approach and methods of the underlying assessments.

As this report is also intended to be a step towards developing a robust and replicable framework for integrated assessments to support MRC's work in the future, in particular the formulation and assessment of exploratory scenarios included in MRC's Strategic Plan for 2016-20 [1], some commentary is also provided on alternatives to the current design.

This report takes as its primary guidance the Inception Report of the Council Study [2] with updates based on the phase II implementation Plan [3] and progress reports of the contributing assessments [4, 5].

This version of the Approach & Methodology report is substantially shorter than the previous version as it has been re-organized to reduce redundant or no longer relevant material as well as to reduce overlap with other documents. This report contains a further five chapters as described below.

Chapter 2, describes how the Council Study (CS) is organised, its overall objectives, the responsibilities of other study components and the overall scope of the Cumulative Impact Assessment (CIA) called for under the CS.

Chapter 3, describes the design of the CIA, with the main emphasis being on the critical comparisons between scenarios and sub-scenarios. The framework of indicators to be used is also described.

Chapter 4, summarises the methods used for the environmental, social and economic assessments as well as sectoral assessments, and for overall integration and synthesis..

Chapter 5, describes the plan for the final, main, report of the CIA. It also lists the principal technical reports and other outputs such as databases, tools and model enhancements.

2 The Council Study

This chapter explains the purpose of the Council Study and briefly summarizes its foundations in past assessment work and implementation.

2.1 Objectives of the Council Study

The overall objective of the Council Study (CS) as set out in the Inception Report [2] is to:

“further enhance the ability of the MRC to advise Member Countries on the positive and negative impacts of water resources development on people, economies and the environment of the Mekong River Basin”.

The specific objectives are to:

1. Further develop/establish a reliable scientific evidence base on the environment, social and economic consequences (positive and negative) of development in the Mekong River Basin
2. Results of the study are integrated into the MRC knowledge base to enhance the BDP process providing support to the Member Countries in the sustainable management and development of the Mekong River Basin.
3. Promote capacity and ensure technology transfer to Member Countries in the process of designing and conducting of the study.

The Cumulative Impact Assessment (CIA) will primarily address the first objective, but also contribute to objectives 2 and 3 through the conduct of the assessment process.

By assessing consequences across six thematic areas as well as identifying hotspots and tipping points the CIA will help inform *“recommendations directly addressing potential uncertainties, risks and the information needs for development planning in the mainstream of the LMB”* [2].

The Council Study will provide insights on transboundary issues, including the regional distribution of benefits, costs, impacts and risks of basin developments. This will require the assessment of past, ongoing and planned water resource development, recognizing that in some countries most water resource development has already taken place, while in other countries much more is underway or planned.

The required outcome of the CIA is a main report that synthesizes what is known about the cumulative impacts and benefits of the selected water resources developments [2]. This will be supported by assessments of the cumulative impacts of water resource development in the six thematic areas.

With better information on the distribution of benefits, costs, impacts and risks of past, ongoing and planned development across the LMB countries, the Member Countries can discuss with more confidence whether this distribution is reasonable, equitable and fair, and whether the planned development leads towards more sustainable development. The results of these discussions can be used for the exploration of alternative development pathways to address Strategic Priority No. 5 of the Basin development Strategy 2016-2020 [1].

2.2 Foundations of the Council Study

Cumulative impact assessment under the CS is intended to build on earlier work undertaken by MRC including on Integrated Basin Flow Management (IBFM) in 2004-6 and by BDP in 2008-10 to assess the basin-wide cumulative impact of national water resources development plans, including alternative configurations of proposed mainstream dams [6]. Since 2010, MRC has made progress on a number of fronts which have bearing on how best to address the objectives of the CS.

- ❑ Firstly, the MRC has addressed key information gaps identified in 2010 which limited the scope of the assessments;
- ❑ Secondly, the MRC has made progress in developing an Indicator Framework to support monitoring;
- ❑ Thirdly, the MRC has made progress in developing the concepts of regional benefit sharing in line with the central objectives of the 1995 Mekong Agreement; and,
- ❑ Fourthly, the MRC has prepared a Basin Development Strategy for 2016-20 which builds on these achievements and establishes the intent to explore alternative development pathways.

Accordingly, the approach in the CS to cumulative impact assessment has been formulated in the light of these achievements and the further work of the CS thematic and discipline teams in a manner that:

- ❑ Overcomes the limitations of earlier assessments, making best use of the new information and tools now available, principally relating to better understanding sediment and nutrient flows, and tools for environmental, economic and social assessment and social assessment;
- ❑ Promotes the concepts of regional benefit sharing by introducing a cumulative assessment approach that will demonstrate the overall positive and negative impacts each Member Country has and would experience in the future if different plans were taken up, expressed in relation to all historic water resources development, so that the principle of reasonable and equitable use can be evaluated;
- ❑ Introduces the concept of exogenous development, recognising that water resource development is not the only sector affecting environmental, social and economic

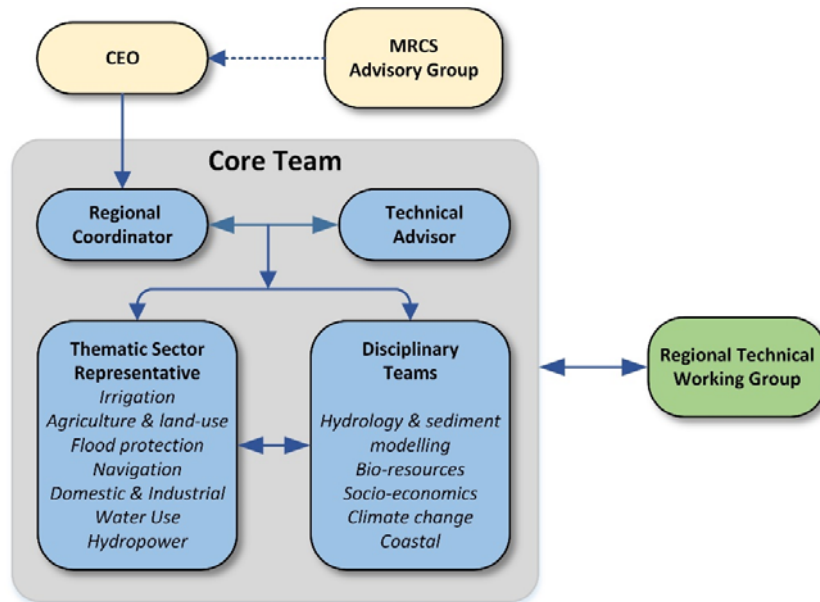
conditions within the basin and that, as a consequence, not only will these conditions continue to change irrespective of water resource developments, but also that the impacts of water resource developments need to be measured taking into account exogenous changes; and

- Recognises that the CS provides the opportunity not only to better understand the complex relationships between development and environmental, social and economic conditions but also, through the insights gained, to provide a framework within which to explore future pathways towards more sustainable development within the LMB.

2.3 Organisation of the Council Study

The Council Study is managed and implemented by the office of the CEO with the support of the CS Core team (Figure 1). An Advisory group, comprising of senior MRCS technical personnel and representatives from the Development Partners advises the CEO and the formulation of principal policy recommendations. The Core Team coordinates the work of the Council Study including input from MRCS technical teams, external consultants and National Line Agencies. A Regional Coordinator and one international technical advisor with experience in management and technical assessments support and lead the Core Team. The work of the Core Team is guided by deliberations of a Regional Technical Working Group (RTWG).

Figure 1 Implementation arrangement showing thematic and discipline teams.



The Core Team is one multi-disciplinary team that integrates the social, economic, and environmental assessments to produce an integrated, multi-sector and CIA. The Thematic

Sector Representatives ensure studies to define the proposed sectoral inputs for inclusion in the main scenarios for 2007, 2020 and 2040 are prepared and that other necessary sub-scenarios are included so that impacts of the sector be meaningfully assessed. These scenarios drive the modelling and bio-resource assessments which in turn are inputs to the environmental, social and economic assessments that are ultimately synthesized using a triple-bottom line or sustainable development logic in the CIA.

3 Design of the Assessment

This chapter describes the key features of the design of the Cumulative Impact Assessment. It explains the origins and logic of the scenarios and sub-scenarios as well as the indicators that will be evaluated and reported. Chapter four describes the assessment methodology.

3.1 Origins

The approach and methodology for this cumulative impact assessment builds on earlier work undertaken by and with the MRC, in particular: by the World Bank under the Mekong Water Resources Assistance Strategy in 2004 [7]; a program on Integrated Basin Flow Management (IBFM) in 2004-06; a commissioned Strategic Environmental Assessment of mainstream dams in 2010 [8]; the cumulative impact assessment of basin-wide scenarios undertaken in 2008-10 by BDP [6]; and more recent and ongoing activities since 2010 including on indicators [1] and of the effects of mainstream hydropower on the delta [9].

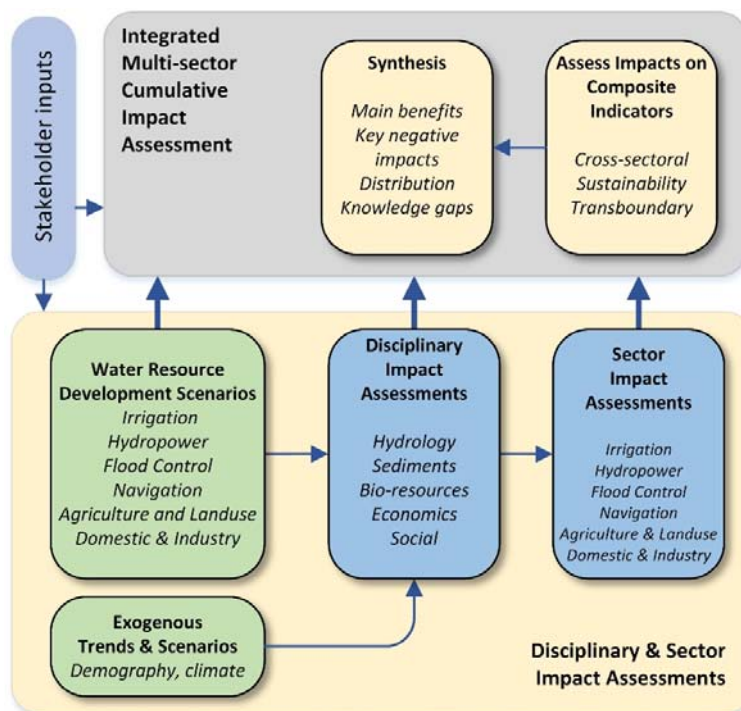
Together these advances create conditions in which the cumulative impact assessment under the Council Study can be carried out in a more comprehensive, integrated and structured approach than has been the case hitherto [10]. In particular, the assessment responds to the challenge to be: **cumulative** by considering water resource development plans in multiple sectors over several decades; **integrative** by evaluating across social, environmental and economic criteria, that is a 'triple-bottom-line'; **inclusive** through iterative engagement with stakeholders; and, **transparent** through explicit articulation of assumptions, communication of uncertainties, and comparisons with work done previously and by others.

3.2 Overview

The cumulative impact assessment is therefore designed to be both a technical and a consultative process with significant iterations between the Member Countries, the technical core team, and a broader pool of stakeholders.

The assessment has several inter-linked components (Figure 2). The scenarios and sub-scenarios are defined based on Member Country inputs in six thematic, or water-related, sectors. These scenarios are used to drive a set of models that integrate changes in land-use and water-related infrastructure to estimate the net impacts on the hydrological regime and sediment dynamics. Other models and tools are then used to assess how these physical changes may impact biological resources, and ultimately economic and social outcomes. The findings of these studies are documented in a set of 'disciplinary' impact assessments. The disciplinary assessments, in turn, inform a set of sector impact assessments which integrate across the social, environmental, and economic insights to understand the impacts from and on that particular sector (Figure 2).

Figure 2 Overview of the cumulative impact assessment process and its relationship to disciplinary and thematic sector assessments



The final component of the cumulative impact assessment is to integrate and synthesize the findings from the various disciplinary and sector assessments (Figure 2). This analysis includes the evaluation of a set of composite indicators that cut-across individual disciplines and sectors. Indicators play an important function in transferring understanding of impacts in one discipline to another as well as in communicating the findings of the assessment more broadly.

3.3 Main scenarios

The definition of scenarios and sub-scenarios in the CS is one of the most critical elements of the design of the CIA as it largely determines what can be rigorously assessed and thus to what extent the objectives of the CS can be met. The main analytical value of scenarios to an assessment, it should be underlined, comes from making logical comparisons among them.

3.3.1 Definition

The CIA will focus on the 3 agreed main water resource development scenarios (Table 1). The Early Development Scenario (M1) includes the infrastructure and the land cover in the

6 sectors as of 2007. The Definite Future Scenario (M2) includes all existing, under-construction, and firmly committed development in the six sectors which are expected to be in place by 2020. The Planned Development Scenario (M3) includes in addition to contents of M2 water resource development that is planned in the six sectors in the Mekong Basin and that would be in place in 2040 if fully implemented. With the study design in Table 1 comparison between M2 and M1 measure the effects of water resource development between 2007-2020, while comparisons between M3 and M2 estimate the effects of planned development between 2020-2040 in the context of a climate expected to be warmer and wetter and with expansion of human settlements in the flood plains. Flood protection infrastructure development is not included in the main scenarios for M2 and M3 so that the impacts of changes in flood regimes can be evaluated in the context of other expected changes, in particular, the expansion of human settlements into floodplains.

Table 1 Main water resources development scenarios for CIA.

	Scenario	Level of Development for water-related sectors*						Climate	Flood-plain settlement
		ALU	DIW	FPF	HPP	IRR	NAV		
M1	Early Development Scenario 2007	2007	2007	2007	2007	2007	2007	1985-2008	2007
M2	Definite Future Scenario 2020	2020	2020	2020	2020	2020	2020	1985-2008	2020
M3	Planned Development Scenario 2040	2040	2040	2040	2040	2040	2040	Mean warmer & wetter	2040

*ALU = Agric/Landuse Change; DIW = Domestic and Industrial Water Use; FPF = flood protection infrastructure; HPP = hydropower; IRR = irrigation; and NAV = Navigation

3.3.2 Elaboration

The details of the main scenarios in particular, were elaborated through a process of consultation and negotiation. First, sector teams compiled information through surveys of official sources in Member Countries about existing (2007) and potential future development (2020 and 2040). Second, as this information was sometimes incomplete or too general experts in the Core Team had to do further analyses and make additional assumptions: for instance, if given a percentage increase in total irrigated area by 2040 they had to do to allocate this total change into plausible locations. Third, the RTWG then approved or requested modifications of the scenarios. As a result of these exchanges the 2040 scenario is intended to be a plausible pathway of development.

3.3.3 Reference period

The three main scenarios and most of the sub-scenarios will be modelled using the same 24 years time series from 1985 – 2008 of hydro-meteorological data (rainfall, evaporation, boundary water levels etc.) agreed to by the MC. As this reference period is held constant in the model runs it allows comparisons to be made between scenarios or sub-scenarios without confounding the results by changes in climate (Table 1). The only sub-scenarios

where the climate input is changed are those sub-scenarios specifically designed to investigate the impacts of climate change (Table 2).

It should be noted that this series is much shorter than ideal. In future assessments, it is recommended that this reference period be extended so as to better capture climate variability across the basin. With such a short time series the climate for specific locations will be greatly influenced by individual extreme events that just happened to fall within the period, or conversely, in other locations situations where extreme events that could easily occur may not be represented in the short sample of years. This limitation needs to be taken into account when interpreting hot spots of high impact.

3.3.4 *Exogenous influences*

Exogenous influences are those which arise from activities not captured in the thematic sectors, but which have bearing on conditions within the basin that affect the magnitude of impacts caused by water resource development. Two have been incorporated into the main scenarios. First, a projected mean trend towards a warmer and wetter climate in 2040 has been included in M3 (Table 1). Second, a projected trend of increased human settlements in the floodplains in 2020 and 2040 has been included in M2 and M3 (Table 1).

The advantage of including mean changes in climate and floodplain settlement within the main scenarios is they allow evaluation of the impacts of water resources to be made in the context of likely future changes, and in this sense, more realistic conditions. The limitation of this design is that it is not possible to unambiguously attribute differences between scenarios. For example, when comparing M2 and M3 any differences found cannot be claimed to have been due to planned development in the water sector between 2020 and 2040, because it may have been caused by differences in assumed climate or changes in land-use in the floodplains. To help overcome this limitation when making interpretations additional sub-scenarios were defined to allow more rigorous comparisons and thus analyses of the effects of different factors on the level of impacts.

3.4 **Sub-scenarios**

In order to respond rigorously to key policy questions arising from the stated objectives and assessment requirements of the Inception Report additional sub-scenarios have been developed.

3.4.1 *Impacts of climate change*

Three sub-scenarios for 2040 are being prepared to explore the interactions between water resource development and changes in climate (Table 2). Comparisons between scenarios M3 and C2 for instance measure the effect of water resources development at the level of 2040 under a climate that is even wetter than mean projections. To help better understand the overall effects of climate change a fourth scenario (C1) is introduced with no climate change against which other scenarios may be compared. The sub-scenarios which assume climate changes (M3, C2, C3 and C4) are derived from statistical downscaling the outputs of a set of global circulation models driven with assumptions of intermediate levels of

greenhouse gas emissions (RCP4.5) and using these estimates to adjust the reference 1985-2008 climate.

Table 2 Climate change sub-scenarios for analysis CIA.

	Sub-scenarios	Level of Development for water-related sectors						Climate	Flood-plain
		ALU	DIW	FPF	HPP	IRR	NAV		
M3	Planned Development Scenario 2040	2040	2040	2040	2040	2040	2040	Mean warmer & wetter	2040
C1	Planned Development 2040 No climate change	2040	2040	2040	2040	2040	2040	1985-2008	2040
C2	Planned Development 2040 + Wetter Climate	2040	2040	2040	2040	2040	2040	Wetter	2040
C3	Planned Development 2040 + Drier Climate	2040	2040	2040	2040	2040	2040	Drier	2040
C4	Planned Development 2040 + More seasonal Climate	2040	2040	2040	2040	2040	2040	More Seasonal	2040

3.4.2 Impacts of early development

To take into account the substantial level of large-scale water resources development already completed by 2007 a sub-scenario for 1960 and 2000 will also be prepared if time and resources permit. Comparisons with these earlier scenarios will provide a much more detailed understanding of the historical trajectories of water resource development and past impacts – an important consideration given the differences in patterns of development among countries in the LMB.

Table 3 Sub-scenario to better understand impacts of early development.

	Scenario	Level of Development for water-related sectors ¹						Climate	Flood-plain
		ALU	DIW	FPF	HPP	IRR	NAV		
M1	Development Scenario 2007	2007	2007	2007	2007	2007	2007	1985-2008	2007
T1*	Pre-Development Scenario 2000	2000	2000	2000	2000	2000	2000	1985-2008	2000
T2*	Pre-Development Scenario 1960	1960	1960	1960	1960	1960	1960	1985-2008	1960

* classified as a second priority of the project, if the fund is available during the implementation period the task will be implemented. However, if no funding and no available resources, this task will be added into the future assessment in the follow up project.

3.4.3 Impacts of individual sectors

To evaluate and report on the impacts and benefits of water resources development in each sector as requested in the Inception Report (see: Table 14) it is necessary to analyse the contributions made by each sector. The best study design for doing this is to compare the main scenario with all sectors developed with a sub-scenario having all the developments apart from those in the target sector. In the following sections these comparisons are tabled for each sector.

3.4.4 Agricultural land-use sub-scenarios

To address the key policy goal in the Inception of reporting on the impacts and benefits of agriculture and land-use development comparisons will be made between main scenario M3 and sub-scenario A1 (Table 4). An alternative scenario with more land-use changes (A2) will also be compared with M3 or A1.

Table 4 Sub-scenario to better understand impacts of different assumptions about future agricultural land-use.

	Scenario	Level of Development for water-related sectors ¹						Climate	Flood-plain
		ALU	DIW	FPF	HPP	IRR	NAV		
M3	Planned Development Scenario 2040	2040	2040	2040	2040	2040	2040	Mean warmer & wetter	2040
A1	Planned Development 2040 without ALU	2007	2040	2040	2040	2040	2040	Mean warmer & wetter	2040
A2	High level ALU implementation	HIGH	2040	2040	2040	2040	2040	Mean warmer & wetter	2040

3.4.5 Flood protection sub-scenarios

To assess the positive and negative impacts of flood protection infrastructure comparisons will be made between main scenario M3 and sub-scenario F1 (Table 5). Two other alternative flood protection strategies (F2 and F3) will also be compared with F1 or M3. The F2 sub-scenario protects urban areas from floods with a 1:100 year average return period (ARP) and floodplains from a 1:20 ARP. The F3 sub-scenario includes joint operation of mainstream dams and selected tributary dams for flood management and protection.

Table 5 Sub-scenarios to better understand impacts of different assumptions about future flood protection investments.

	Scenario and sub-scenarios	Level of Development for water-related sectors						Climate	Flood-plain
		ALU	DIW	FPF	HPP	IRR	NAV		
M3	Planned Development Scenario 2040	2040	2040	2040	2040	2040	2040	Mean warmer & wetter	2040
F1	Planned Development 2040 without FPF	2040	2040	2007	2040	2040	2040	Mean warmer & wetter	2040
F2	Planned Development 2040 with FPF2	2040	2040	FPF2	2040	2040	2040	Mean warmer & wetter	2040
F3	Planned Development 2040 with FPF3	2040	2040	FPF3	2040	2040	2040	Mean warmer & wetter	2040

3.4.6 Irrigation sub-scenarios

To assess the positive and negative impacts of irrigation infrastructure overall comparisons will be made between main scenario M3 and sub-scenario I1 (Table 6). Another sub-scenario with even more irrigation infrastructure (I2) will also be compared with I1 or M3.

Table 6 Sub-scenarios to test the effects of water resources development in the irrigation sector.

	Scenario and sub-scenarios	Level of Development for water-related sectors						Climate	Flood-plain
		ALU	DIW	FPF	HPP	IRR	NAV		
M3	Planned Development Scenario 2040	2040	2040	2040	2040	2040	2040	Mean warmer & wetter	2040
I1	Planned Development 2040 without IRR	2040	2040	2040	2040	2007	2040	Mean warmer & wetter	2040
I2	Planned Development 2040 with IRR HIGH	2040	2040	2040	2040	HIGH	2040	Mean warmer & wetter	2040

3.4.7 Hydropower sub-scenarios

To assess the positive and negative impacts of hydropower development comparisons will be made between main scenario M3 and sub-scenario H1 (Table 7). Two other alternative hydropower development (H2 and H3) will also be compared with H1 or M3. Sub-scenario H2 (or HPS1) contains a subset of the planned mainstream hydropower dams with limited coordination as in M3. Sub-scenario H3 (or HPS2) also has subset of dams but with joint

operations in the mainstream cascade and key tributary dams to improve production, multi-purpose opportunities and reduce impacts [11].

Table 7 Sub-scenarios to test the effects of water resources development in the hydropower thematic sector.

	Scenario and sub-scenarios	Level of Development for water-related sectors						Climate	Flood-plain
		ALU	DIW	FPF	HPP	IRR	NAV		
M3	Planned Development Scenario 2040	2040	2040	2040	2040	2040	2040	Mean warmer & wetter	2040
H1	Planned Development 2040 without HPP	2040	2040	2040	2007	2040	2040	Mean warmer & wetter	2040
H2	Planned Development 2040 with HPS1	2040	2040	2040	HPS1	2040	2040	Mean warmer & wetter	2040
H3	Planned Development 2040 with HPS2	2040	2040	2040	HPS2	2040	2040	Mean warmer & wetter	2040

3.4.8 Navigation sub-scenarios

To assess the positive and negative impacts of navigation infrastructure comparisons will be made between main scenario M3 and a single sub-scenario N1 (Table 8).

Table 8 Sub-scenarios to test the effects of water resources development in navigation sectors.

	Scenario and sub-scenarios	Level of Development for water-related sectors						Climate	Flood-plain
		ALU	DIW	FPF	HPP	IRR	NAV		
M3	Planned Development Scenario 2040	2040	2040	2040	2040	2040	2040	Mean warmer & wetter	2040
N1	Planned Development 2040 without NAV	2040	2040	2040	2040	2040	2007	Mean warmer & wetter	2040

3.4.9 Domestic and industrial water use sub-scenarios

To assess the positive and negative impacts of domestic and industrial water use comparisons will be made between main scenario M3 and sub-scenario D1 (Table 9). Two other sub-scenarios to explore impacts of sand-mining have also been proposed: D2 with sustainable sand mining and D3 with high sand mining rate.

Table 9 Sub-scenarios to test the effects of water resources development in in the domestics and industrial water use sectors

	Scenario and sub-scenarios	Level of Development for water-related sectors						Climate	Flood-plain
		ALU	DIW	FPF	HPP	IRR	NAV		
M3	Planned Development Scenario 2040	2040	2040	2040	2040	2040	2040	Mean warmer & wetter	2040
D1	Planned Development 2040 without DIW	2040	2007	2040	2040	2040	2040	Mean warmer & wetter	2040
D2*	Planned Development 2040 with DIW1	2040	DIW1	2040	2040	2040	2040	Mean warmer & wetter	2040
D3*	Planned Development 2040 with DIW2	2040	DIW2	2040	2040	2040	2040	Mean warmer & wetter	2040

* classified as a second priority of the project, if the fund is available during the implementation period the task will be implemented. However, if no funding and no available resources, this task will be added into the future assessment in the follow up project.

3.5 Indicators

Indicators play important functions in the assessment. First, indicators are needed to help transfer understanding and estimates of impacts in one discipline, tool or model to another. Second, indicators are useful for communicating the findings of the assessment more broadly.

3.5.1 Framework

The framework of indicators used by the CIA is informed by but not restricted to the MRC Strategic Indicator Framework (Table 10). For example, the *climate change* dimension has been dropped because many of its components are not indicators of the outcome of water resource development but rather drivers of change and thus better captured in scenarios in the assessment. The strategic indicator on adaptation and its contributing assessment indicators however are considered useful for examining impacts and have been re-labelled as *resilience* and classified under the *social* dimension. The cooperation dimension is not relevant to the CIA; it is about monitoring organizational performance, and is also dropped. A fourth dimension 'integrated' is introduced which includes composite indicators that cut-across disciplines and sectors. The modified CIA impact framework thus has 4 dimensions (social, environmental, economic, and integrated) consistent with triple-bottom line language in the Inception Report [2].

Table 10 Comparison of the strategic indicators used in the assessment and the emerging MRC indicator framework.

Dimensions	Strategic Indicators	
	CIA Indicator Framework	MRC Indicator Framework
Social	Well-being Employment Social cohesion Equality Resilience	Living conditions and well-being Employment in MRC sectors
Environmental	Water flow conditions in mainstream Water quality and sediment conditions in mainstream Status of environmental assets	Water flow conditions in mainstream Water quality and sediment conditions in mainstream Status of environmental assets
Economic	Economic value of MRC sectors Contribution to national economy	Economic performance of MRC sectors Contribution to national economy
Integrated	Resource sustainability Cross-sectoral synergies Transboundary balance	
Climate change		Greenhouse gas emissions Climate change trend and extreme Adaptation to climate change
Cooperation		Equity of benefits derived from the Mekong River system Benefits derived from cooperation Self-finance of the MRC Level of information sharing and participation

3.5.2 Strategic indicators

The strategic indicators used in the CIA have been selected to inform the assessment of positive and negative impacts of the water resource development scenarios. Two new strategic indicators – social cohesion and equality – have been included under the *social* dimension to help strengthen the analysis and communication of the social component of the assessment (Table 10). The equality indicator minimally includes measures of gender and income inequality (Table 11). The social cohesion indicator will be a composite of measures related to public participation, trust in authority and social capital.

Three other strategic indicators that capture different elements of the integration challenge are also introduced (Table 11). These integrated, composite, assessment indicators for the CIA will be derived from sub-sets and combinations of indicators from the disciplinary and sector assessments as well new information if necessary.

Table 11 Candidate composite strategic indicators for use in the Cumulative Impact Assessment based on selected indicators from the disciplinary assessments.

Dimension	Composite Strategic Indicators	Disciplinary assessment Indicators	Comment
Social	Wellbeing	Water security Food security Income security Health security	.
	Employment	Employment in MRC sectors Employment satisfaction	
	Social cohesion	Public participation Trust and public acceptance Social capital	
	Equality	Gender inequality Income equality	
	Resilience	Total flood protected area Total water storage Total irrigated area	
Environmental	Water flow conditions in mainstream	Dry season flows – PMFM compliance Flood season peak flows – PMFM compliance Tonle Sap reverse flows – PMFM compliance Timing of onset of wet season flows Annual flooding	
	Water quality and sediment conditions in mainstream	Mainstream water quality – PWQ compliance Sediment transport in the mainstream Salinity intrusion in the delta	
	Status of environmental assets	Wetland area River channel conditions and habitats River bank erosion risk Aquatic biodiversity Ecologically significant areas	
Economic	Net economic value of MRC sectors	Economic value of irrigated agriculture, recession agriculture, rainfed agriculture, hydropower production, flood damage, drought damage, capture fisheries, etc. Economic expenditure on tourism and recreation	

Dimension	Composite Strategic Indicators	Disciplinary assessment Indicators	Comment
	Contribution to national economy	Proportion of MRC sectors to overall GDP	
Integrated	Resource sustainability	Economic value of sectors Wellbeing Employment Water flow Water quality Environmental assets	Composite change indicator for impacts on sustainability or efficiency
	Cross-sectoral synergies	Economic value of sectors Social cohesion Equality Resilience	Composite change indicator for synergies and trade-offs among sectors
	Transboundary balance	Water flow Water quality Environmental assets Economic value	Composite change indicator for evenness in distribution of impacts and benefits among countries

3.6 Assessment areas

The focus of the assessment is on areas in the LMB impacted by water resources development, in particular, those areas likely to be directly impacted positively or negatively by changes in mainstream hydrology and bio-resource conditions, being defined in the CS as:

- A corridor on both sides of the mainstream from Chinese border to Kratie
- The Cambodia Floodplains including the Tonle Sap River and Great Lake
- The Mekong Delta in Cambodia and Viet Nam
- The coastal areas directly influenced by the Mekong estuary

It is recognized that to properly understand these impacts, particular analyses may need to consider the full Mekong River Basin or consider information at the country level.

Many of the tools above are being developed as part of the CS. It is important that stakeholders in the CS have confidence in the results produced by these new tools and models. This requires that each new tool is calibrated and peer reviewed.

4 Methods

This chapter summarizes briefly the key methods behind the disciplinary and sectoral assessments and describes the strategies and methods for how these will be integrated and synthesized to complete the cumulative impact assessment.

4.1 Overall

In this report, **cumulative** impact assessment is understood to refer to the notion of examining impacts of many projects (accumulating across projects) which may not all be implemented at the same time and trigger responses which may be delayed (accumulating across time), and integrated (accumulating across development criteria or the triple bottom line). This synthesis and integration component builds directly on the results of the disciplinary and thematic sector assessments. Table 12 summarizes the key scenario and sub-scenario comparisons made to test for various effects and their use in the various disciplinary assessments.

Table 12 Scenario and sub-scenario comparisons used by the disciplinary and thematic assessments. Cells left empty are a lower priority and may be evaluated after others have been completed.

Effects tested	Key Scenario or sub-scenario Comparisons	Disciplinary Assessments				
		Hydrological	Sediments	Bio-resources	Economic	Social
Overall water resources development	M3 vs M2	X	X	X	X	X
	M2 vs M1	X	X	X	X	X
	M1 vs T1	X	X			
	M1 vs T2	X	X			
Climate change	C1 vs C2	X	X	X	X	X
	C1 vs C3	X	X	X	X	X
	C1 vs C4	X	X	X	X	X
	M3 vs C1	X				
Irrigation development	M3 vs I1	X	X	X	X	X
	M3 vs I2	X				
Hydropower development	M3 vs H1	X	X	X	X	X
	M3 vs H2	X				
	M3 vs H3	X				
Navigation development	M3 vs N1	X	X	X	X	X

Effects tested	Key Scenario or sub-scenario Comparisons	Disciplinary Assessments				
		Hydrological	Sediments	Bio-resources	Economic	Social
Domestic & Industry water use (and Sand Mining)	M3 vs D1	X	X	X	X	X
	M3 vs D2	X				
	M3 vs D3	X				
Agriculture & land-use development	M3 vs A1	X	X	X	X	X
	M3 vs A2	X				
Flood protection infrastructure development	M3 vs F1	X	X	X	X	X
	M3 vs F2	X				
	M3 vs F3	X				

Two pathways to impact need to be considered in the social and economic assessments. First, those mediated through changes in the hydrological regime. One example would be if changes in seasonal flood pulse caused changes in fish populations, in turn, impacting on livelihoods of fishers. Second, are those not so mediated: for example, arising from the cost of construction of infrastructure or the employment it generates or relocation of population.

As is apparent from Table 12 comparisons of scenarios and sub-scenarios will provide most of the analytical insights in the assessment. Not all assessment combinations will need to be undertaken in full. In cases for which the hydrological assessment finds no significant differences among a pair of scenarios, for example, there is no need for subsequent assessments to consider impacts mediated by changes in hydrological regimes. These assessments will still need to consider direct impacts.

Apart from comparison of scenarios and sub-scenarios listed above, assessments will also be encouraged to gain insights from comparisons of impacts in:

- Low flow versus high flow periods in normal years;
- Very wet compared to normal years;
- Very dry compared to normal years.

Finally, one of the benefits of running models out for 23 years while holding the level of water infrastructure constant is that it allows consideration in the assessment of different possible patterns of response over time from ecosystems, social or economic systems (Figure 3). Assessment teams will be encouraged to consider evidence of longer-term benefits or negative impacts.

Figure 3 Impacts and benefits from water resource development are not instantaneous or necessarily linear over time.



The details of the methods and indicators used in the environmental, social and economic assessment are documented fully elsewhere [4, 5, 12]. The following sections highlight some of the key methodological features.

4.2 Environmental assessment

The objective of the environmental assessment is to determine the impacts on environmental conditions within the LMB of the water resource development scenarios and sub-scenarios (Table 12). The general sequence will be from changes in the hydrological regime, water quality and sediment dynamics through to bio-physical and ecological changes.

Various scenario analysis models and tools are being developed, calibrated and validated to describe and link these impacts [12]. The DSF suite of approved modelling tools will be used to link infrastructure developments, land use changes and climate change with changes in mainstream flow conditions, flooding and saline intrusion. WUP-FIN and other models will be used to link infrastructure developments, sand mining, and other developments, with changes in mainstream sediment and nutrient flow conditions. The DRIFT expert system will be used to link changes in mainstream flow, sediment, nutrient and salinity conditions with indicators related to bio-physical conditions in the basin and the productivity of ecological assets.

4.3 Social assessment

The objective of the social assessment is to determine the impacts on social conditions within the LMB of the changes driven by scenarios and sub-scenarios of water resource development (Table 12). The social impact of the development scenarios will be assessed against the social assessment indicators (Table 10). For example, the living conditions and well-being indicator define communities as water secure if sufficient households (HHs) have access to safe water, have reliable primary domestic water sources run dry, do not experience either water shortages or floods that result in crop damage.

A key element of the proposed quantitative part of the assessment will be to identify statistical associations between indicators in existing datasets from corridor and non-corridor household surveys (SIMVA and EMRF) and to use these as a basis for modelling the impacts of different scenarios and sub-scenarios.

If this approach turns out to be infeasible because of data limitations or complexity or relations then other more direct, qualitative or expert-evaluation approaches will be adopted. In some situations focussing on direction and levels of change in the value of an indicator as a measure of impact, for instance, may be much easier than trying to estimate the values under two conditions. Moreover, estimates of direction of change or difference may also be more robust than estimates of projected values.

All social assessment indicators are subject to impacts from both water resource developments as well as exogenous developments and thus the latter must be taken into account in the analysis or interpretation whenever possible. Causal-loop or influence diagrams can be used to make analytical reasoning and assumption transparent.

4.4 Economic assessment

The main objectives of the economic assessment are to: (i) estimate the economic benefits and costs of existing and planned water resource developments; (ii) evaluate the economic impacts of interventions (both positive and negative); (iii) determine the distribution of economic benefits and costs, as well as economic losses, between LMB countries; and (iv) estimate the impact on employment and livelihoods.

The economic assessment will be in two parts. The first part focuses on economic valuation of the impacts of the three development scenarios on the economic performance of MRC sectors using conventional methods. The second part will examine the contribution of these impacts overall on the national economy, including, if possible structural changes.

4.5 Thematic sector assessments

Each of the thematic sector assessments has two main components.

First, description and projection of the level of development of the sector in 2007, 2020 and 2040 as inputs to the construction of the three main water resource development scenarios (Table 1).

Second, analysis and interpretation of the impacts and benefits of that sectors development based on the findings of the hydrological, environmental, economic and social assessments including specific scenario and sub-scenario comparisons (Table 12). Assessing the positive and negative impacts of a sector as a whole is the main task and will be investigated by comparing sub-scenarios which exclude developments in that sector with the corresponding main scenario.

4.6 Integration & synthesis

The final component of the assessment is integration and synthesis. This activity might be described in full as the **cumulative, multi-sector, integrated assessment**. It builds on the results and insights of the disciplinary and thematic sector assessments.

4.6.1 Analytical strategies

The main analytical strategies will be to:

- Collate evidence of significant impacts from the comparisons made between scenarios in the individual assessments, and use these alongside key messages in the text;
- Compare changes in value of a specific strategic indicators across assessments, for example, across sectors, displaying important information in graphic form whenever possible;
- Analyse and interpret differences in the three integration indicators, retaining them in the synthesis if they add value to the individual strategic indicators;
- Convene an expert panel to help evaluate important, but complex qualitative evidence;
- Select a handful of well understood causal chains from hydrological changes through to positive or negative social and economic impacts that can be used to illustrate the linked assessment process;
- Identify and highlight critical knowledge gaps, for instance, important issues not covered by the assessment or data needs;
- Compare findings of the assessment with those of previously published studies, acknowledging limitations and outstanding issues.

4.6.2 Composite integration indicators

Three composite, integrated, indicators are proposed (Table 11). The first, *resource sustainability*, is intended to capture the idea of decoupling development from the environment, that is, obtaining large increases in economic and social benefits without incurring large negative impacts on the environment. The second, *cross-sectoral synergies*, is intended to measure the extent of synergies or trade-offs among sectors including capture fisheries. The third, *transboundary balance*, is intended to measure the extent to which impacts and benefits are equitably distributed among countries. It is anticipated that all three indicators will be derived directly from strategic or more basic assessment indicators used in the disciplinary-based assessments. Several alternative formulations of the composite indicators will be tested and that with reasonable behaviour and easy to communicate will be used.

4.6.3 *Technical and stakeholder consultations*

As the synthesis and integration task is complicated and some findings and evidence may be open to alternative interpretations, it will be extremely important for drafts of the findings to be deliberated upon, both with technical experts and a broader stakeholder group. The outcome of these exercises will not necessarily be consensus. Nevertheless, these consultations are critical to ensure that all relevant knowledge is considered, and that the findings of the report and key assumptions behind conclusions based on expert evaluations are transparent and understood.

5 Outputs and reporting

5.1 Cumulative Impact Assessment Report

The Cumulative Impact Assessment Report will be equivalent to the Main Report [3]. It will integrate the key findings of the individual thematic sector and disciplinary reports to assess the overall impacts and benefits of the water resources development scenarios.

5.1.1 *Style and organization*

The main report will play an important role in communicating the findings of the Cumulative Impact Assessment and Council Study. The report should therefore be concise, easy to read and be liberally illustrated with meaningful graphics. The proposal is to structure the report around a handful of key messages as outlined in Table 13.

Table 13 Proposed organization of the final Cumulative Impact Assessment report.

Chapters	
1.	Executive Summary
2.	Introduction
3.	Key Message 1: Most important benefits and opportunities
4.	Key Message 2: Most significant negative impacts and risks
5.	Key Message 3: Key trade-offs and synergies
6.	Key Message 4: Implications for planning and policy
7.	Key Message 5: Knowledge gaps
8.	Key Message 6: Main recommendations

To allow interested readers to investigate issues in greater-depth the main report will liberally cross-references the set of supporting technical reports (Table 14), and thus also act as an index into the more important analyses and results.

Chapter 2, the introduction, will describe the rationale, purpose and design of the assessment.

Chapters 3-5 will focus on key findings of the analysis. The report will describe the evolution of regional distribution of benefits, costs, impacts and risks of water resources development in the Mekong basin. Key graphics will highlight significant changes in strategic indicators for individual countries with water resources development in 2020 and 2040 compared to 2007. Other graphics will show the impacts of climate change and water resource development in particular sectors. Integrated indicators will be used as

appropriate to underline insights with respect to sustainability, synergies and transboundary distribution of benefits and negative impacts.

Chapters 6-8 will reflect on the key findings to highlight and discuss the main implications of the assessment for planning and policy as well as identify knowledge gaps, and offer recommendations. The analysis of implications will consider ways to ensure planned development is leading towards improved security within the LMB, and more equitable water use between the Member Countries. Key uncertainties and gaps in knowledge will be identified and their implications for interpretation and needs for further work clearly communicated. The main recommendations are expected to relate to options to avoid or reduce negative impacts while still meeting social development objectives.

The entire report will be 35-50 pages in length.

5.2 Supporting reports and documents

The final CIA report will be supported by the reports of the Thematic and Disciplinary teams (Table 14).

Table 14 Supporting reports for the CIA

Topic	Reports
Irrigation	A Thematic Report on the Impacts and Benefits of Irrigation Development in the Lower Mekong River Basin Including Recommendations for Impact Avoidance and Mitigation Measures.
Agriculture and Land-use Change	A comprehensive land-use/land cover map for the council study A Thematic Report on Impacts of Non-irrigated Agriculture Development and General Trends in Major Land-Use Categories in the Lower Mekong River Basin Including Recommendations for Impact Avoidance and Mitigation Measures.
Domestic and Industrial Water Use	A Thematic Report on Impacts and Benefits of Domestic and Industrial Water Use in the Lower Mekong River Basin including Recommendations for Impact Avoidance and Mitigation Measures.
Flood protection and flood plain infrastructure	A Thematic Report on Impacts and Benefits of Flood Protection Structures and Floodplain Infrastructure and Impact of other Developments on Flood Risk Including Recommendations for Impact Avoidance and Mitigation Measures.
Hydropower	A Thematic Report on Impacts and Benefits of Hydropower Development in the Lower Mekong River Basin Including Recommendations for Impact Avoidance and Mitigation Measures.
Navigation	A Thematic Report on the Impacts and Benefits of Navigation Infrastructure Development in the Lower Mekong River Basin Including Recommendations for Impact Avoidance and Mitigation Measures.
Coastal	A Thematic Report on the Impacts of water resource development on coastal environments.

Hydrology and climate	A disciplinary technical report on hydrological modelling.
Sediment transport	A disciplinary technical report on sediment transport.
Biological Resources	Technical report outlining changes in selected ecological and environmental parameters
Social	A report documenting the social assessment including socio-economic or livelihood analyses
Economic	A report documenting the economic assessment including a resource economics and macro-economic perspectives.
Design & methods	A report summarizes main features of the Assessment Design and Methods

In addition to the above, peer review and associated technical reports will be prepared for the new analytical tools described below.

5.3 Databases and tools

The CS will also result in MRC being equipped with a range of important databases and analytical and assessment tools as summarised below.

The **analytical tools** will include:

- An enhanced DSF to model changes in mainstream flow and saline intrusion;
- Improved WUP-FIN and other models to model mainstream sediment and nutrient flow conditions;
- A calibrated DRIFT methodology to evaluate changes in bio-physical conditions and the productivity of ecological assets;
- A social impact spreadsheet tool to model impacts on social conditions arising from changes in environmental and hydrological conditions; and
- GIS applications to support the assessment process.

The **assessment tools** will include:

- An environmental assessment spreadsheet tool to evaluate assessment indicators;
- A social assessment spreadsheet tool to evaluate assessment indicators; and
- An economic spreadsheet tool to evaluate to evaluate assessment indicators.

The **databases**, which generally will be geo-referenced, will include:

- An agriculture and land use database, including watershed management, deforestation, livestock and aquaculture, and fisheries;

- A water supply and sanitation database, including industrial development;
- An enhanced irrigation database;
- An enhanced hydropower database;
- An enhanced spatial database of flood protection structures and floodplain infrastructure;
- An enhanced spatial database of mainstream navigation facilities;
- A complete set of environmental, social and economic discipline specific indicators at data capture date and adjusted for a consistent set valued for 2007;
- A set of data and maps describing the pre-development situation;
- A set of trend functions for the discipline specific indicators describing the impacts of exogenous development; and
- Data sets describing the Council Study scenarios for 2007, 2020 and 2040.

6 Literature Cited

- [1] MRC. (2016). *Integrated Water Resources Management-based Basin Development Strategy for the Lower Mekong Basin. 2016-2020* Vientiane: Mekong River Commission.
- [2] MRC. (2014). *The Council Study. "Study on the Sustainable Management and Development of the Mekong River, including Impact of Mainstream Hydropower Projects". Inception Report. Final Draft. 27 October 2014.* Mekong River Commission.
- [3] MRC. (2016). *The Council Study. "Study on the Sustainable Management and Development of the Mekong River, including Impact of Mainstream Hydropower Projects". The Phase II Implementation Plan. Version 05. 12 October 2016.* Mekong River Commission.
- [4] MRC. (2016). *The Council Study. Approach and methodology for economic impact assessment of development scenarios, Version 03. December 2016.* Mekong River Commission.
- [5] MRC. (2016). *The Council Study. Approach and methodology for social impact assessment of development scenarios, Version 03. November 2016.* Mekong River Commission.
- [6] MRC. (2011). *Assessment of Basin-wide Development Scenarios. Main Report. April 2011.* Basin Development Plan Programme, Mekong River Commission.
- [7] World Bank. (2004). *Mekong Regional Water Resources Assistance Strategy: Modelled Observations on Development Scenarios in the Lower Mekong Basin.* World Bank.
- [8] ICEM. (2010). *Strategic Environmental Assessment of Hydropower on the Mekong Mainstream. Final Report prepared for the Mekong River Commission.* International Centre for Environmental Management.
- [9] DHI. (2015). *Study on the impacts of mainstream hydropower on the Mekong River. Final Report to Ministry of Natural Resources and the Environment, Vietnam. December 2015.*
- [10] Keskinen, M., M. Kumm, M. Käkönen, and O. Varis. (2012). *Mekong at the Crossroads: Next Steps for Impact Assessment of Large Dams.* *Ambio*, **41**(3): p. 319-324.
- [11] MRC. (2016). *Consultancy to assist the Hydropower Thematic in Council Study. Development Scenarios. Final Report. 9 November 2016.* Mekong River Commission.
- [12] MRC. (2016). *The Council Study. Modelling status and summary to support Council Study. Interim Technical Report. Version 3.0. October 2016.* Phnom Penh: Mekong River Commission.